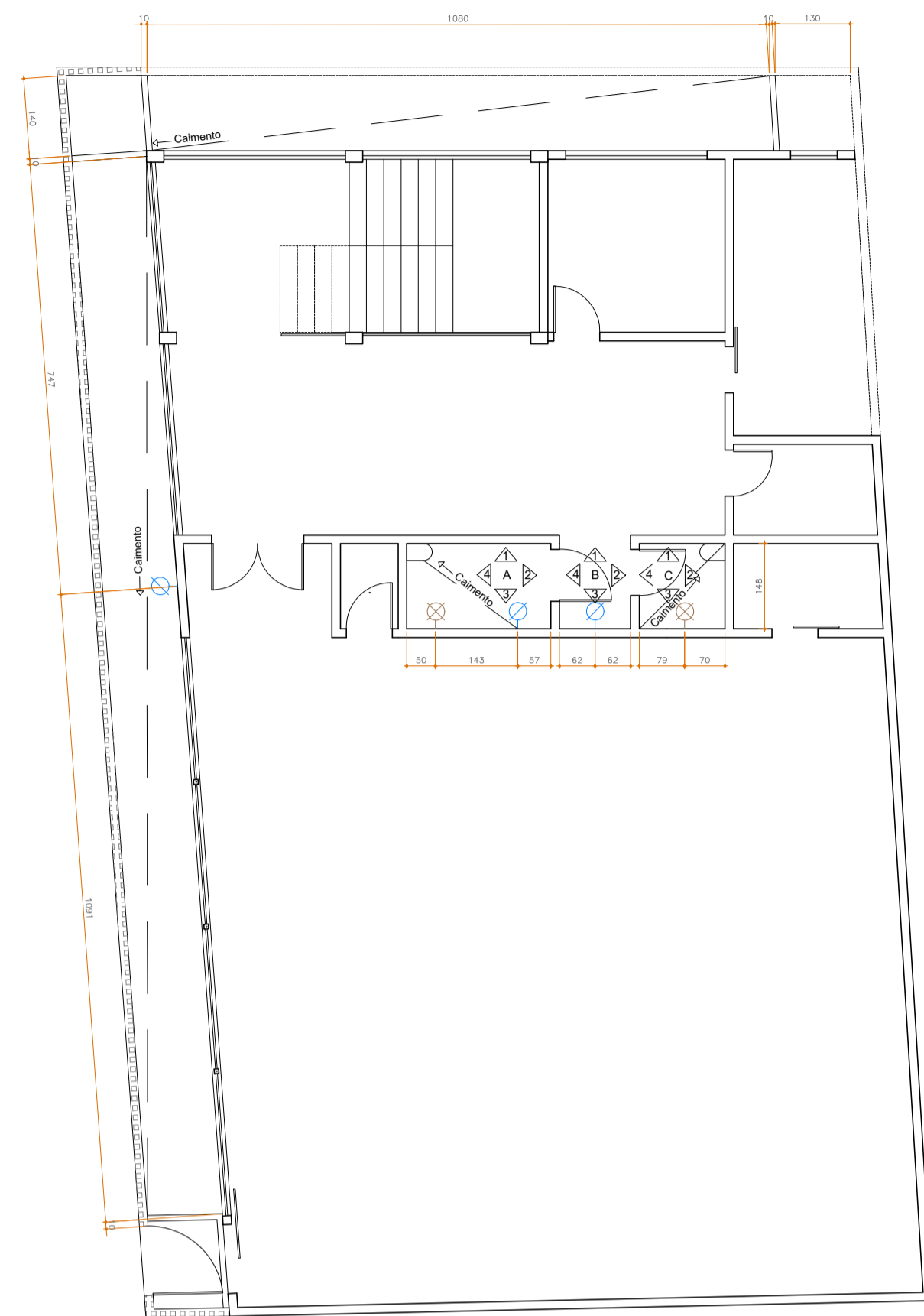
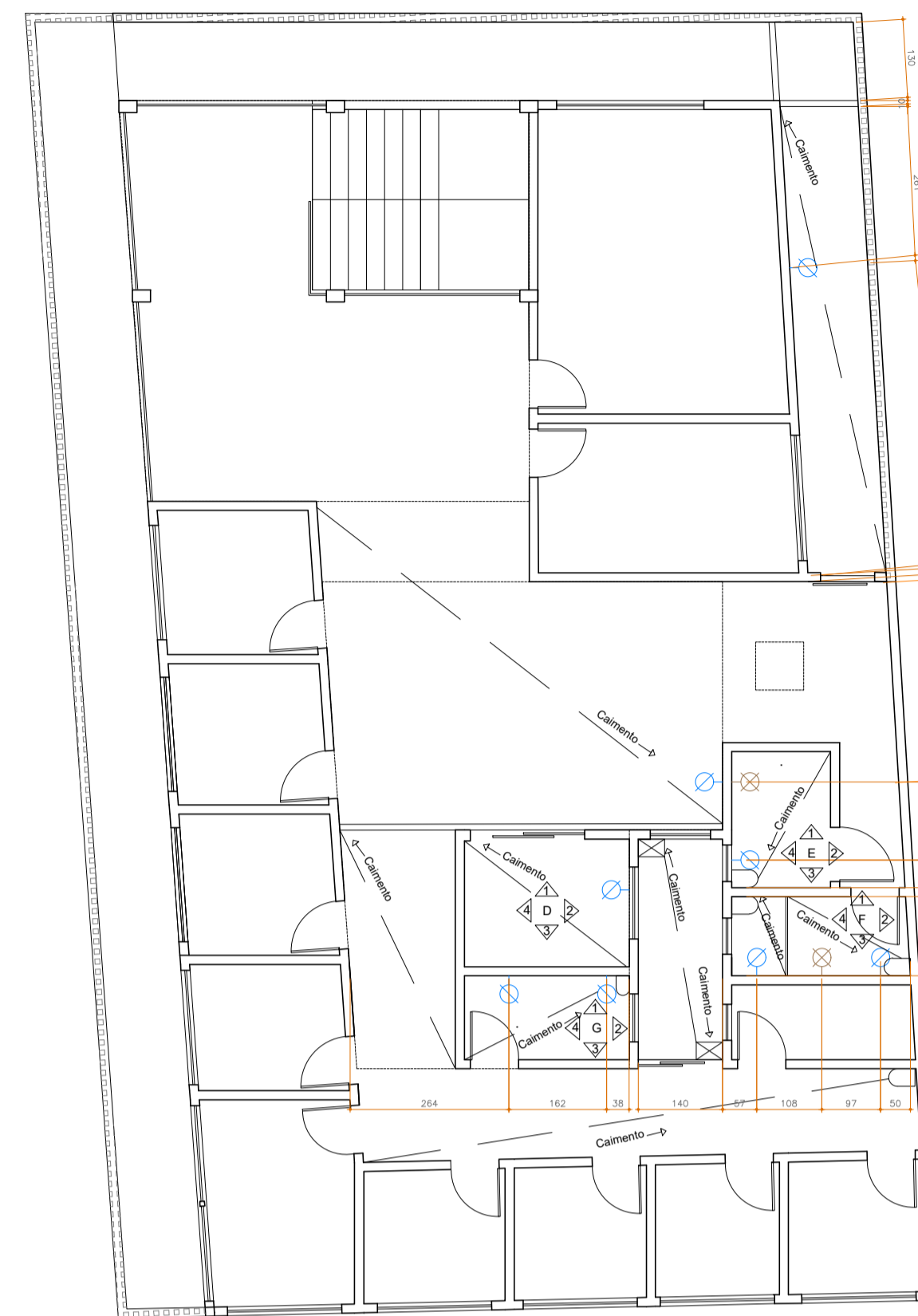


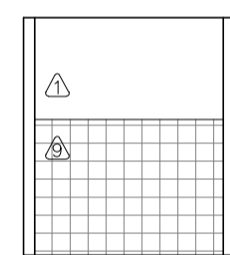
1 **TÉRREO**
ESCALA 1/100



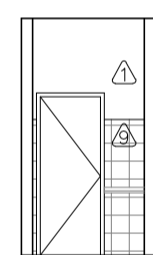
2 **PRIMEIRO PAVIMENTO**
ESCALA 1/100



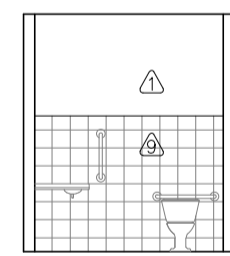
3 **SEGUNDO PAVIMENTO**
ESCALA 1/100



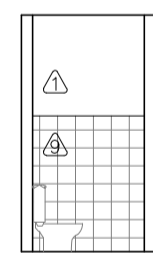
6 **VISTA A1**
ESCALA 1/100



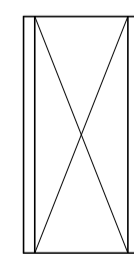
7 **VISTA A2**
ESCALA 1/100



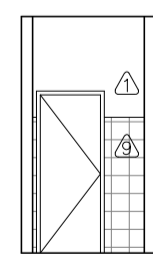
8 **VISTA A3**
ESCALA 1/100



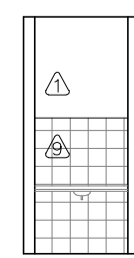
9 **VISTA A4**
ESCALA 1/100



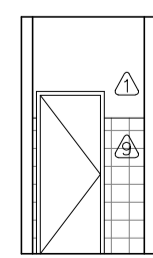
10 **VISTA B1**
ESCALA 1/100



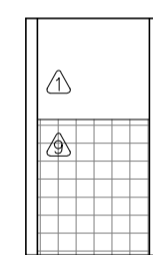
11 **VISTA B2**
ESCALA 1/100



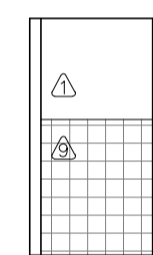
12 **VISTA B3**
ESCALA 1/100



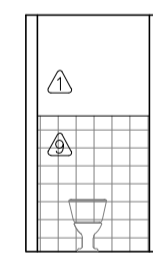
13 **VISTA B4**
ESCALA 1/100



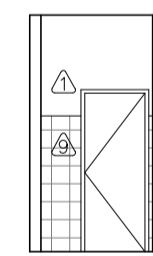
14 **VISTA C1**
ESCALA 1/100



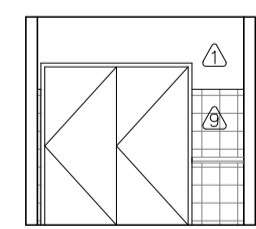
15 **VISTA C2**
ESCALA 1/100



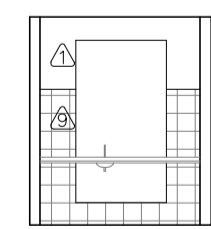
16 **VISTA A3**
ESCALA 1/100



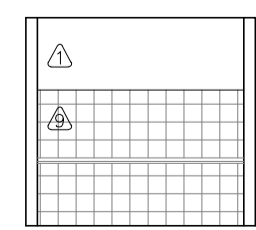
17 **VISTA A4**
ESCALA 1/100



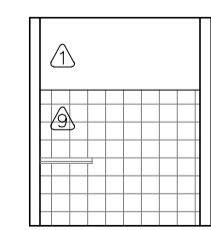
18 **VISTA D1**
ESCALA 1/100



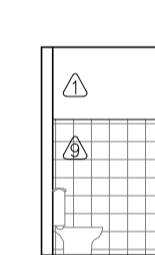
19 **VISTA D2**
ESCALA 1/100



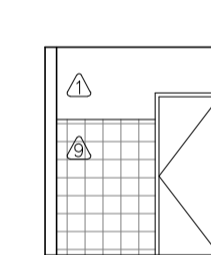
20 **VISTA D3**
ESCALA 1/100



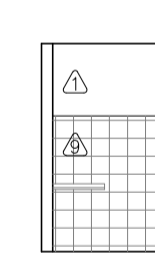
21 **VISTA D4**
ESCALA 1/100



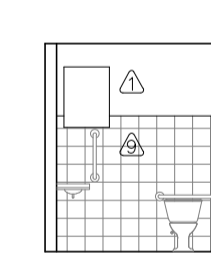
22 **VISTA E1**
ESCALA 1/100



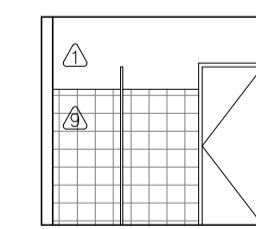
23 **VISTA E2**
ESCALA 1/100



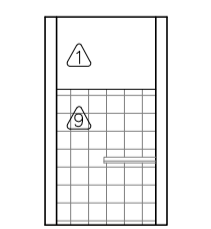
24 **VISTA E3**
ESCALA 1/100



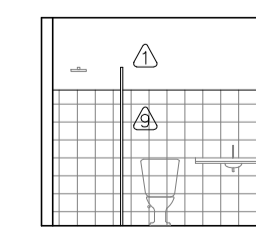
25 **VISTA E4**
ESCALA 1/100



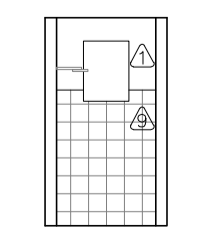
26 **VISTA F1**
ESCALA 1/100



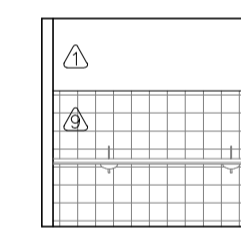
27 **VISTA F2**
ESCALA 1/100



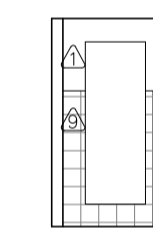
28 **VISTA F3**
ESCALA 1/100



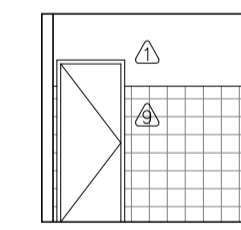
29 **VISTA F4**
ESCALA 1/100



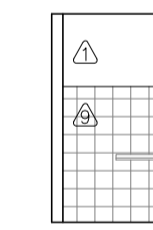
30 **VISTA G1**
ESCALA 1/100



31 **VISTA G2**
ESCALA 1/100



32 **VISTA G3**
ESCALA 1/100



33 **VISTA G4**
ESCALA 1/100

ACABAMENTOS

PAREDE	DESCRIÇÃO	METRAGEM
△	Tinta acrílica branca lavável Acabamento acetinado	1.193 m ²
⊕	Ladrilho hidráulico	74,3 m ²

- ☒ dreno jardim ☒ esgoto
- ☐ ralo linear corrido ☒ água fria
- ☐ ralo simples

PONTOS HIDRÁULICOS

Estúdio LAA TEL. +55 32 3371 5073	CONTRATANTE Secretaria Administrativa da Câmara Municipal de Rio Pomba	RESP. TÉCNICO Arq. Lígia Agostini CAU-MG 176298-2	ESCALA Indicada
ENDEREÇO DA OBRA Rua Januário Lima, 55 Bairro Jardim América - Rio Pomba Minas Gerais	OBRA Sede da Câmara Municipal de Rio Pomba	CO-AUTORIA Rafael Vidal Aleska Oliveira	DATA Junho de 2019
[05-05]	REFERÊNCIA DETALHE ÁREAS MOLHADAS		

