

SEDE DA CÂMARA MUNICIPAL DE RIO POMBA

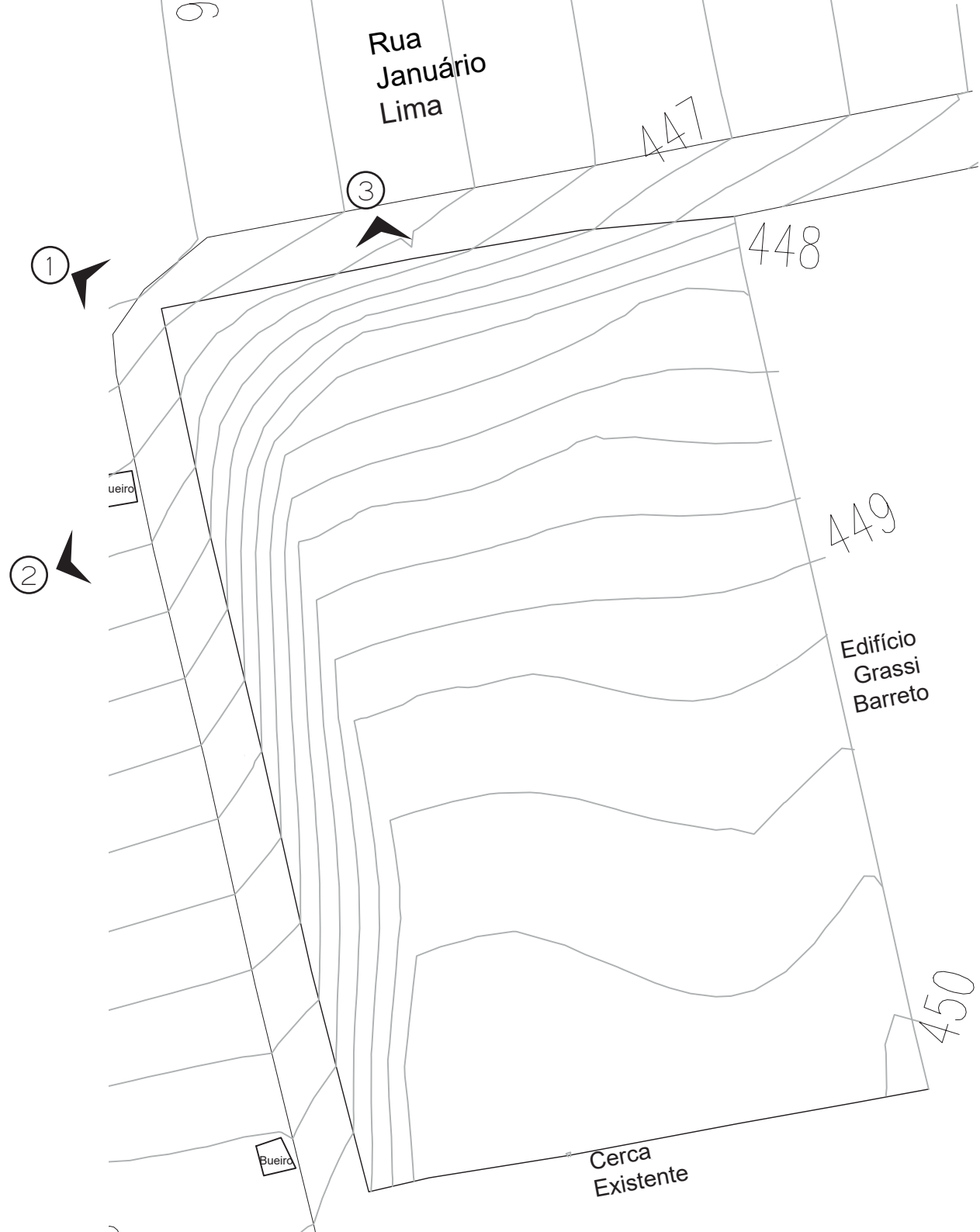
# ANTEPROJETO

ESTÚDIO LAA  
+55 32 3371 5073

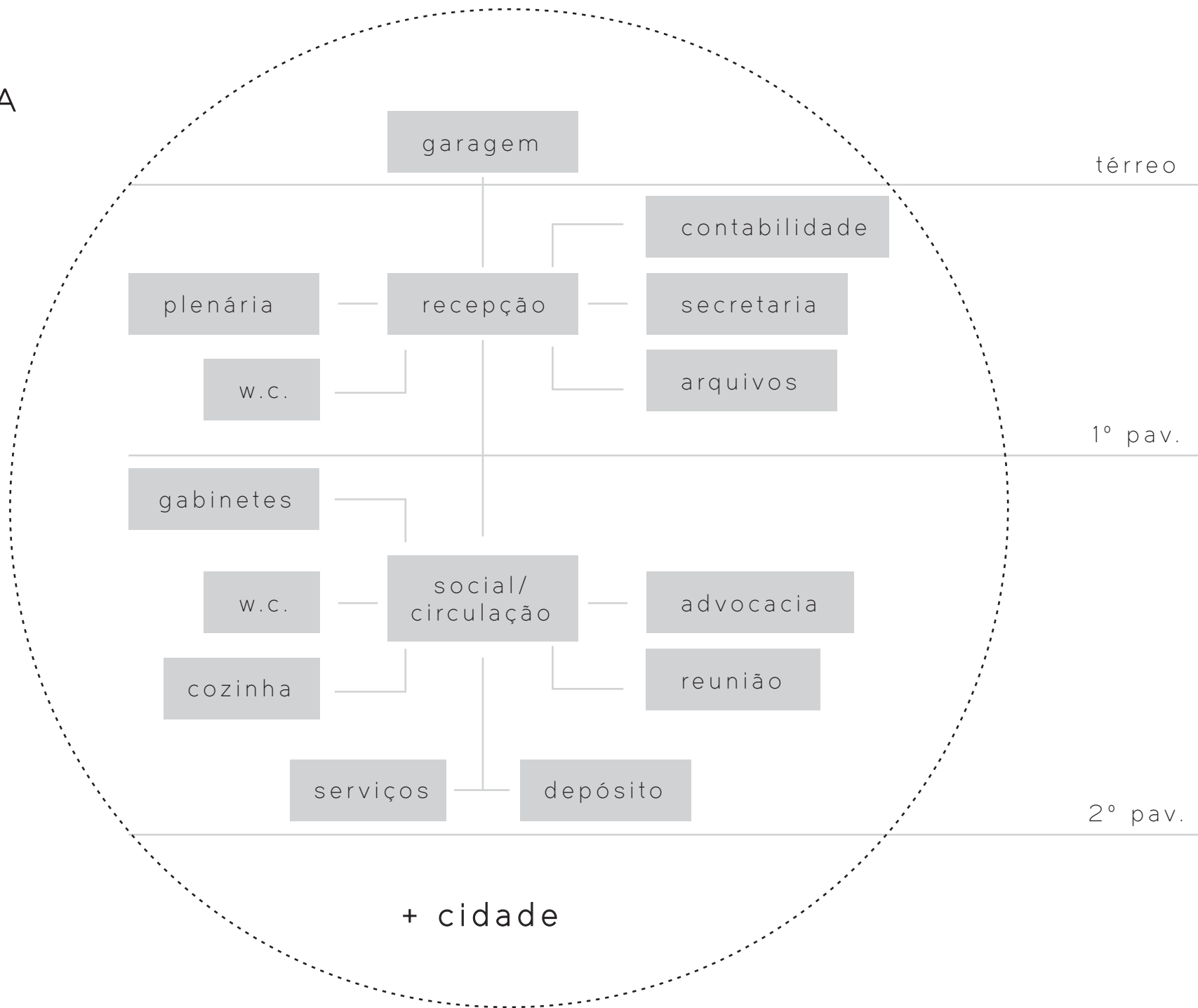
ENDEREÇO DA OBRA  
Rua Januário Lima, 55  
Bairro Jardim América - Rio Pomba  
Minas Gerais

CONTRATANTE  
Secretaria Administrativa da  
Câmara Municipal de Rio Pomba

# TERRENO

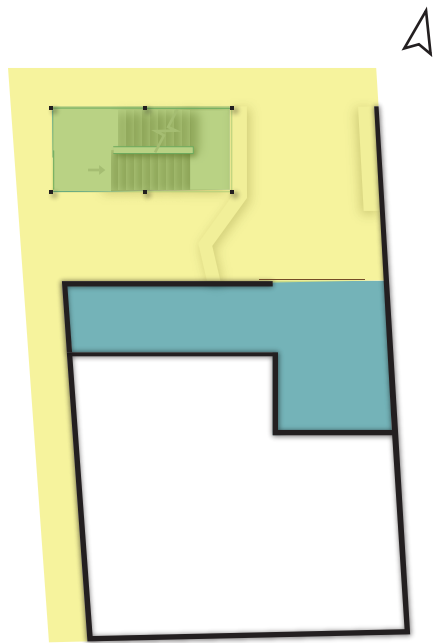


# DEMANDA





# PÚBLICO X PRIVADO






TÉRREO



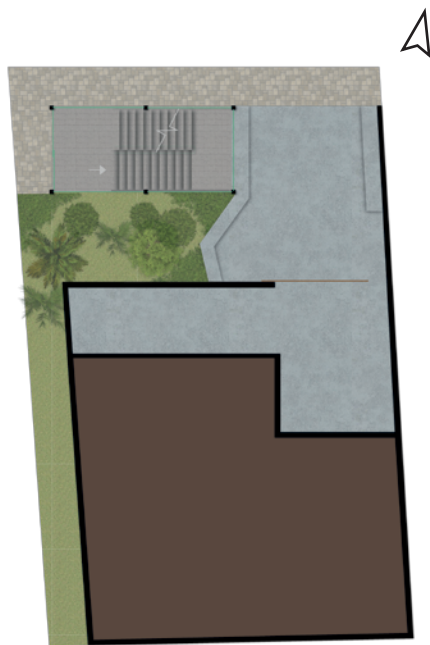
PRIMEIRO PAVIMENTO



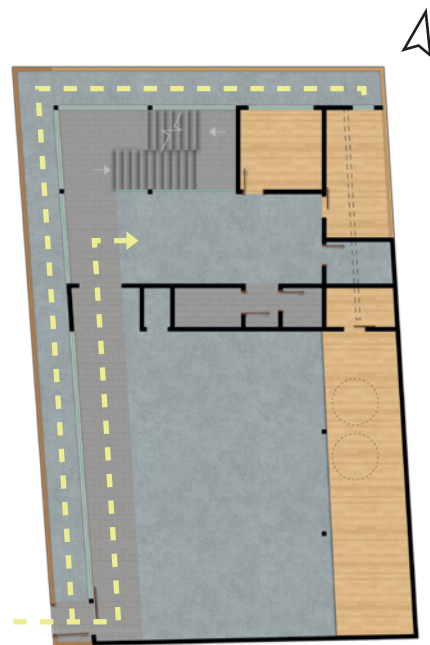
SEGUNDO PAVIMENTO

-  PÚBLICO
-  SEMIPÚBLICO
-  PRIVADO

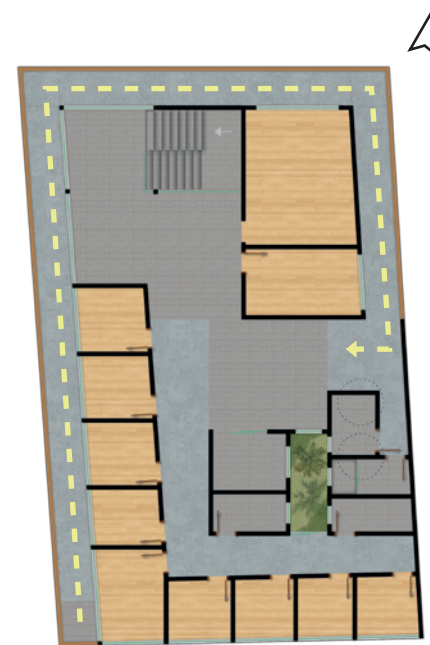
# ACESSIBILIDADE



TÉRREO



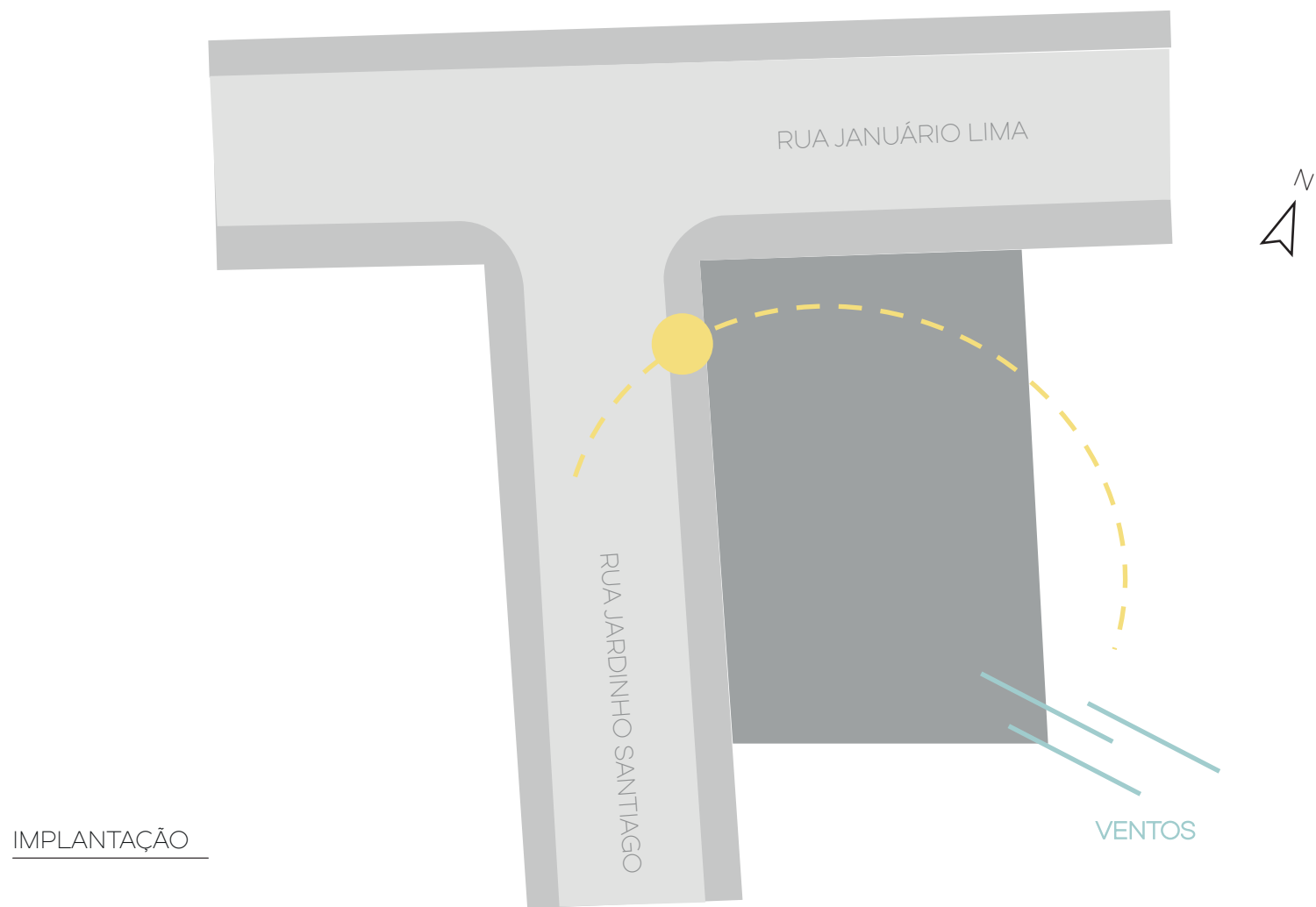
PRIMEIRO PAVIMENTO



SEGUNDO PAVIMENTO

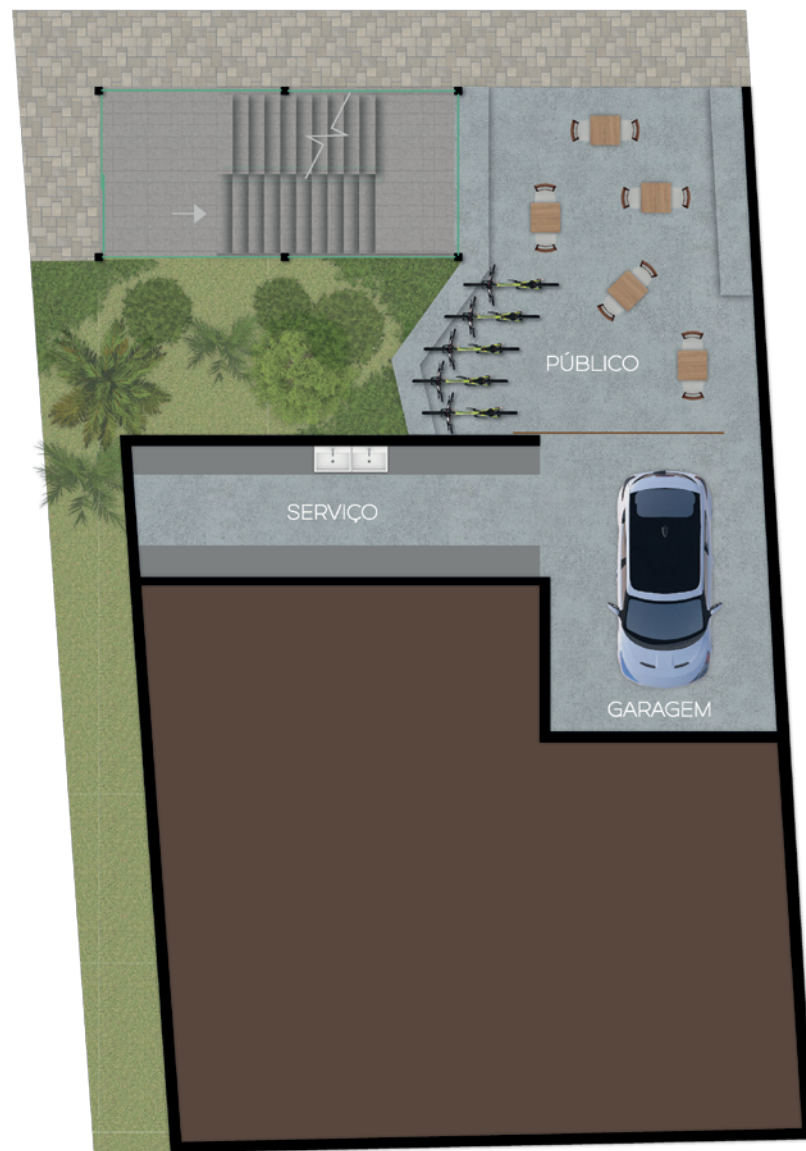
---> ROTA ACESSÍVEL

# ORIENTAÇÃO



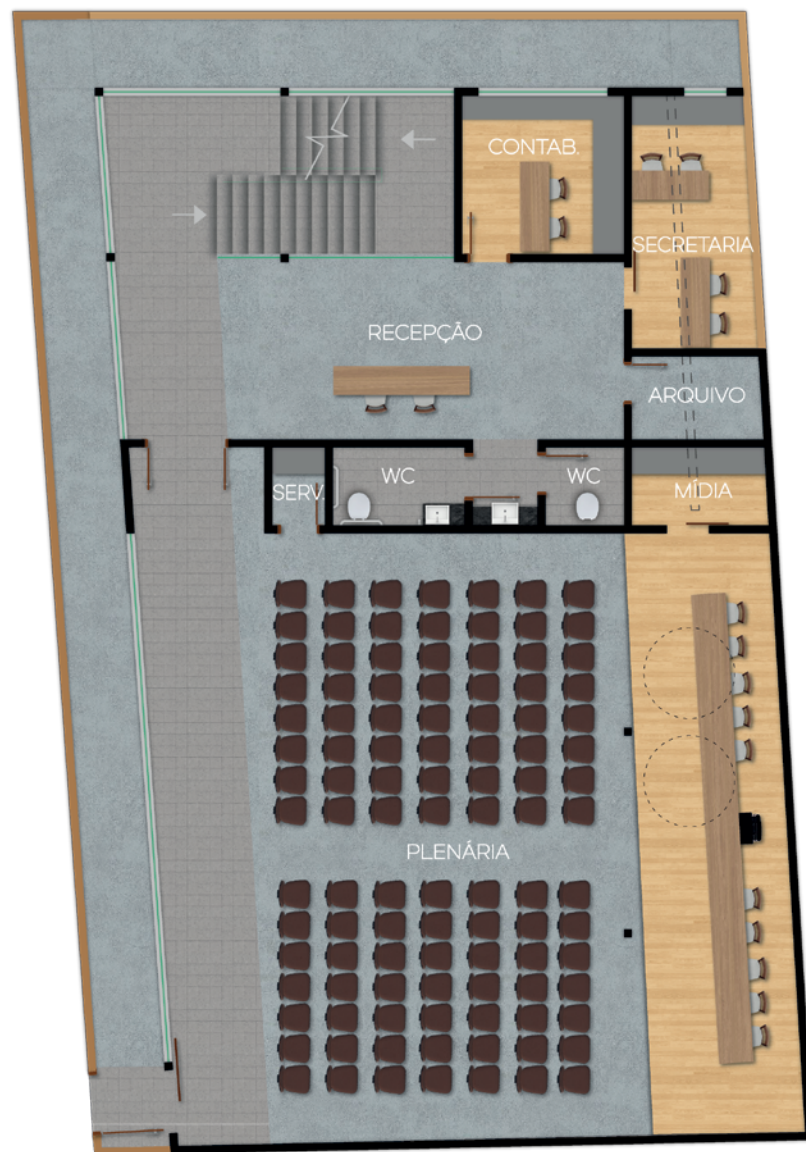
# TÉRREO

área = 187m<sup>2</sup>



1º PAV

área = 284,5m<sup>2</sup>

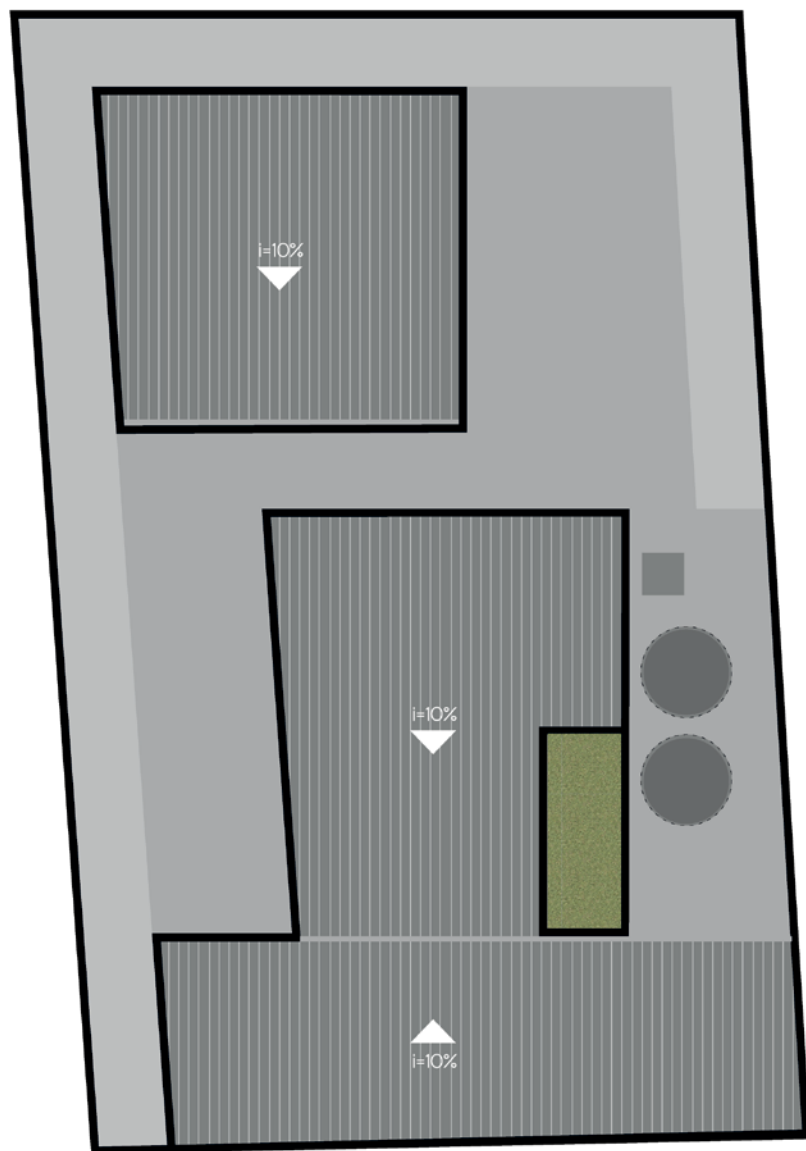


2º PAV

área = 235m<sup>2</sup>

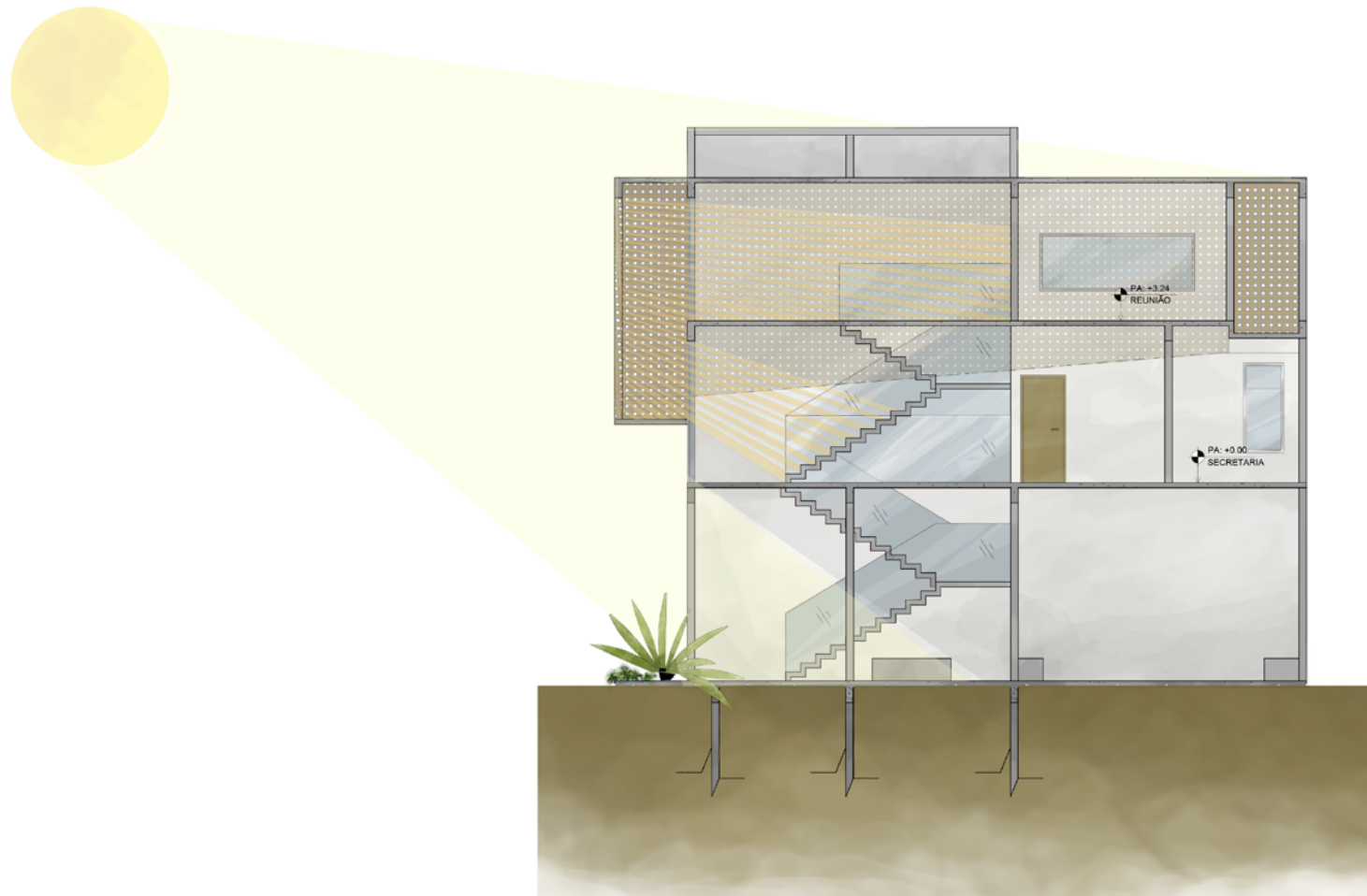


# COBERTURA



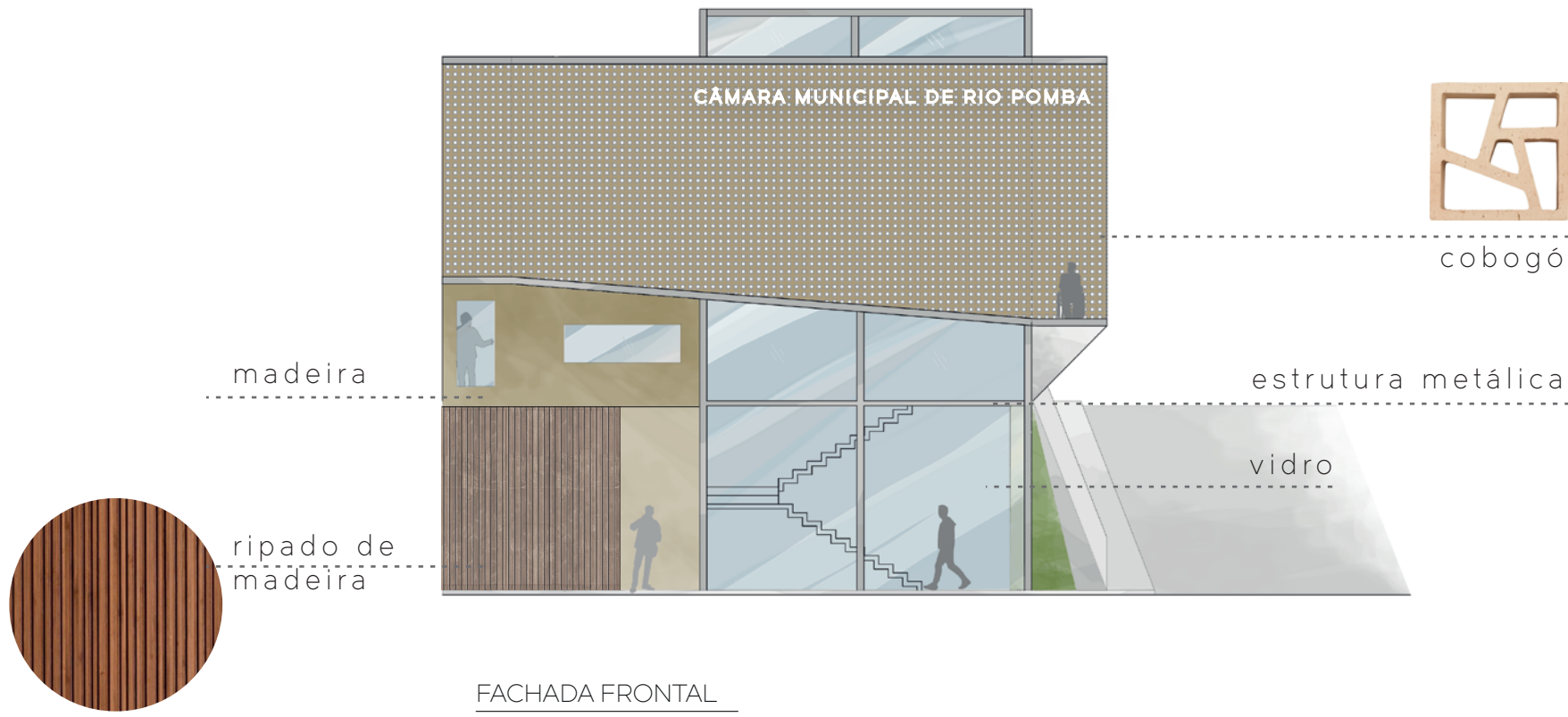


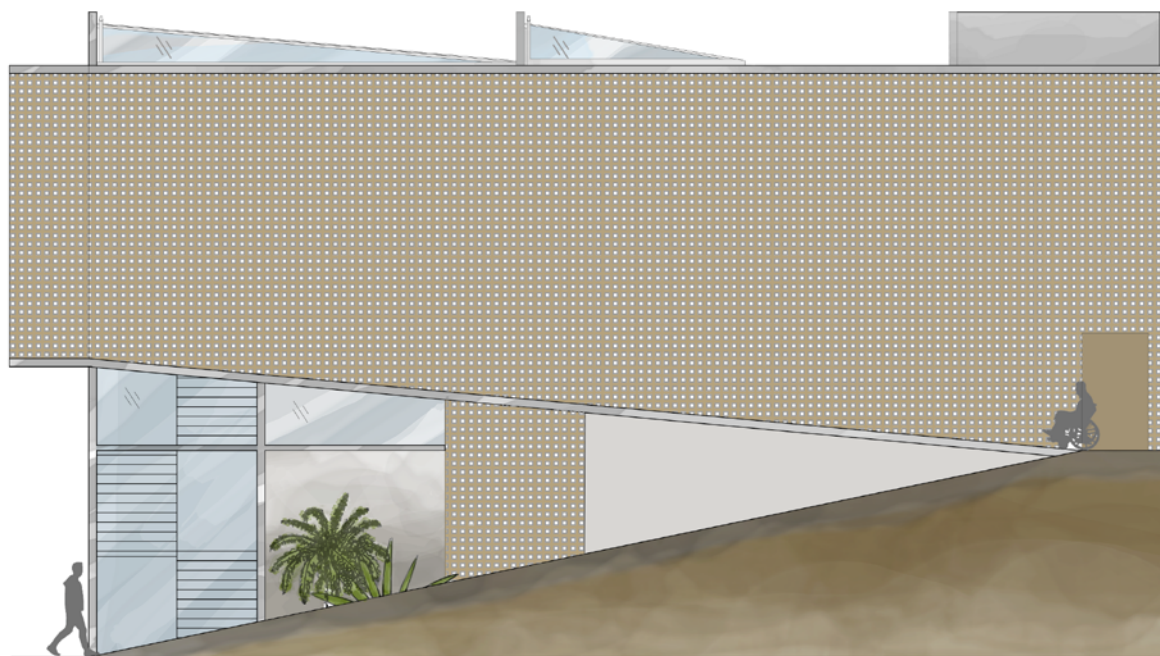
# ESTUDO DE INSOLAÇÃO



CORTE AA







FACHADA LATERAL DIREITA



